

LDM MONITOR TOOL TRAINING INSTRUCTIONS

1. MONITOR TOOL

1.1 Purpose

- The “Monitor Tool” provides a live status view of the LDM monitoring updates.
- The status of the mains and panels with their breakers and subfeeds can be observed.
- An “Event Log” is provided to view prior system events such as alarms.

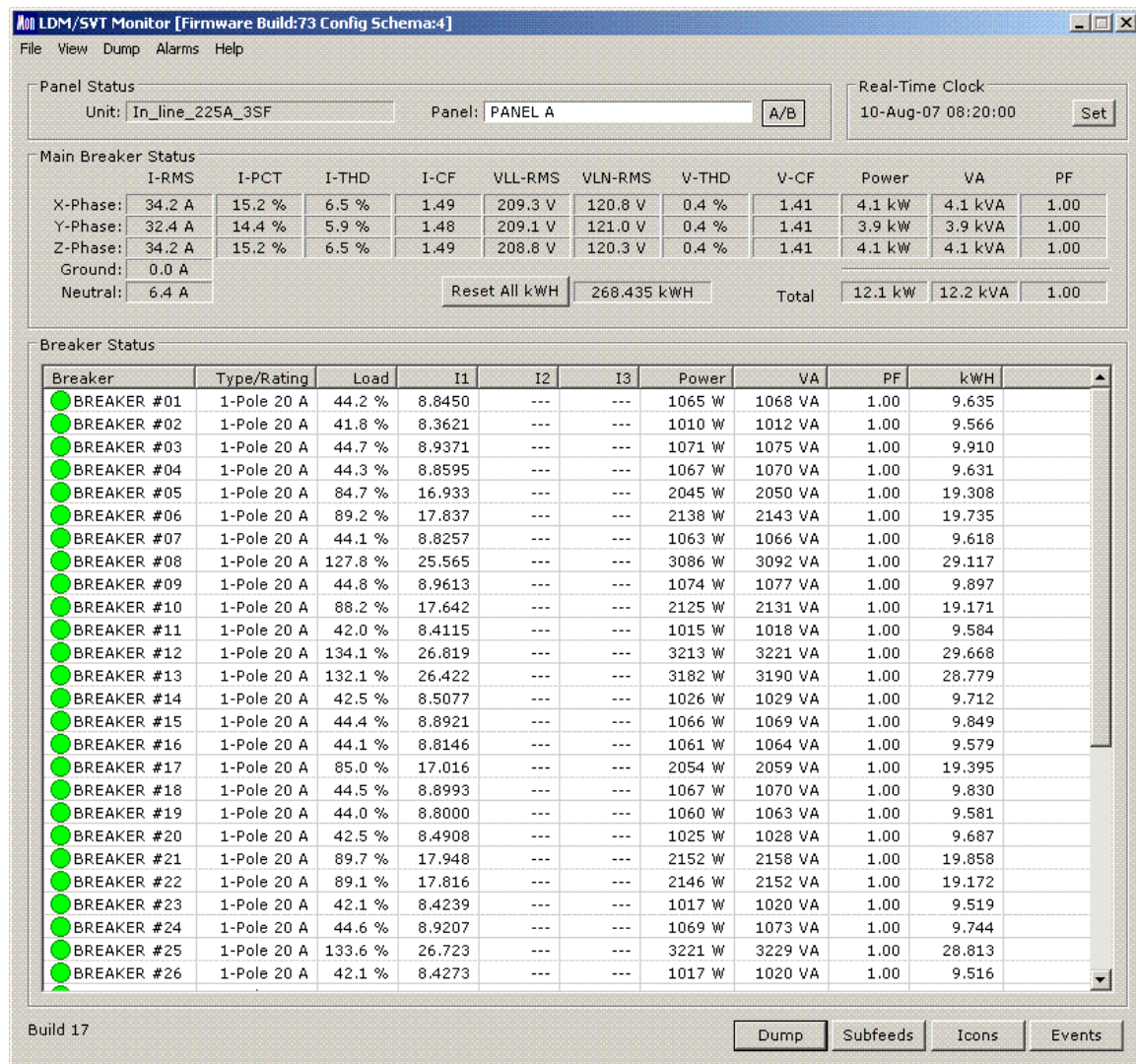


Figure 1: Table View

1.2 Status Indicators

- Panel Status - Configuration name, Panel being monitored (A or B), button to toggle between A and B.

- Main Breaker Status - See Fig. 1
- Breaker Status - See Fig. 1
- Subfeed Status - See Fig. 2.

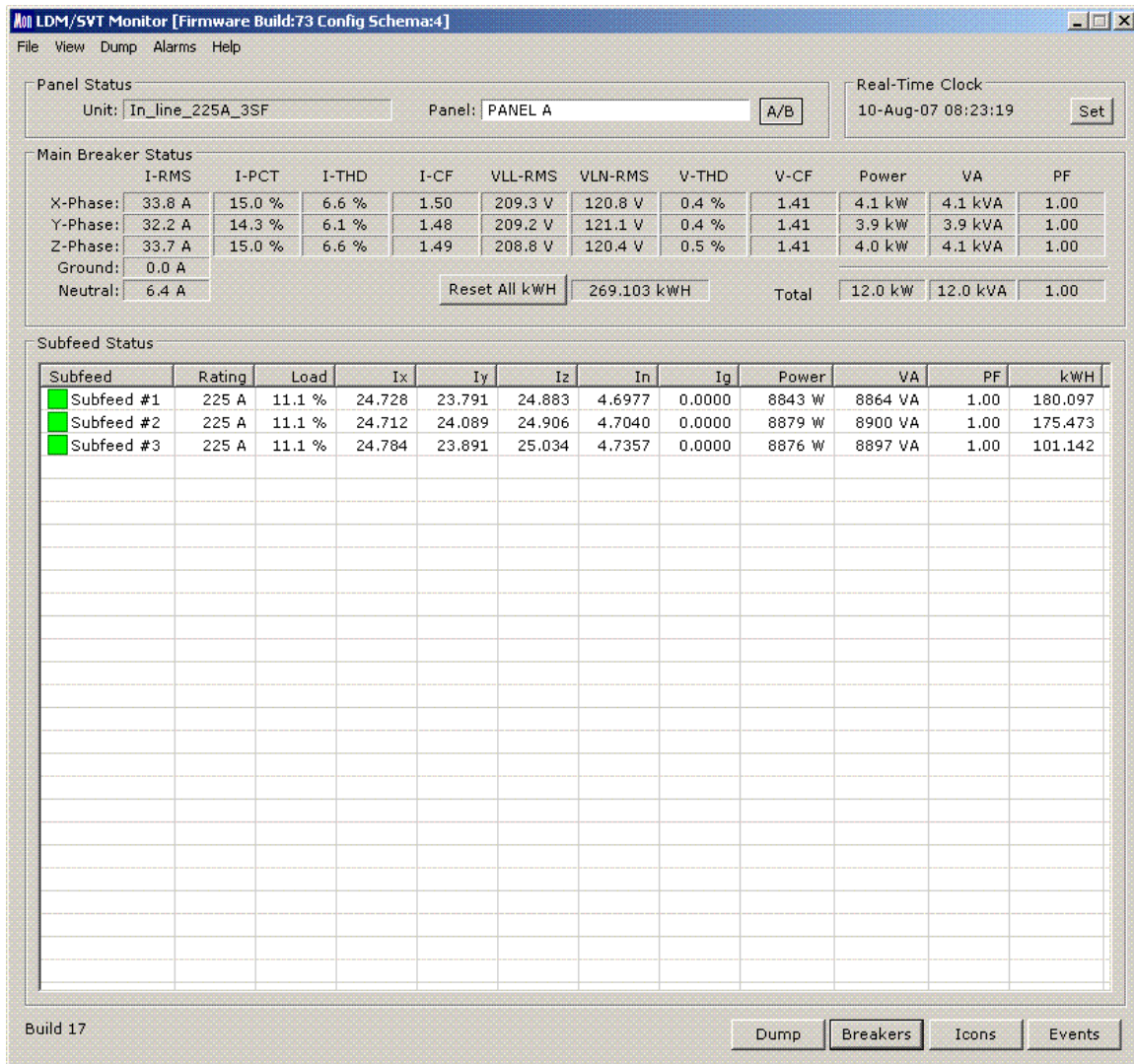


Figure 2: Subfeed Display

1.3 Alarm Indicators

- Alarm condition for Breaker or Subfeed indicated by change in color of Breaker or Subfeed icon from green to yellow (warning) or red (alarm).
- Alarm condition for Mains indicated by change in color of data area from gray to yellow (warning) or red (alarm).

1.4 Clock

- Provides date and time. “SET” button provided to update date and time/See Fig. 1

1.5 Event Logs - Alarms and warnings.

- Event logs for panels A and B

- Service Event Log available to service technicians

1.6 Lower Screen Toggle Buttons

- Dump - Loads data from current windows displayed for panels A, B, and subfeeds into an excel spreadsheet so that it can be saved or a hard copy can be printed.
- Subfeeds/Breakers - Select which objects data will be displayed
- Icons/Table - Icon or Data Table for item being monitored/See Figs. 1 (Table) and 3 (Icon)

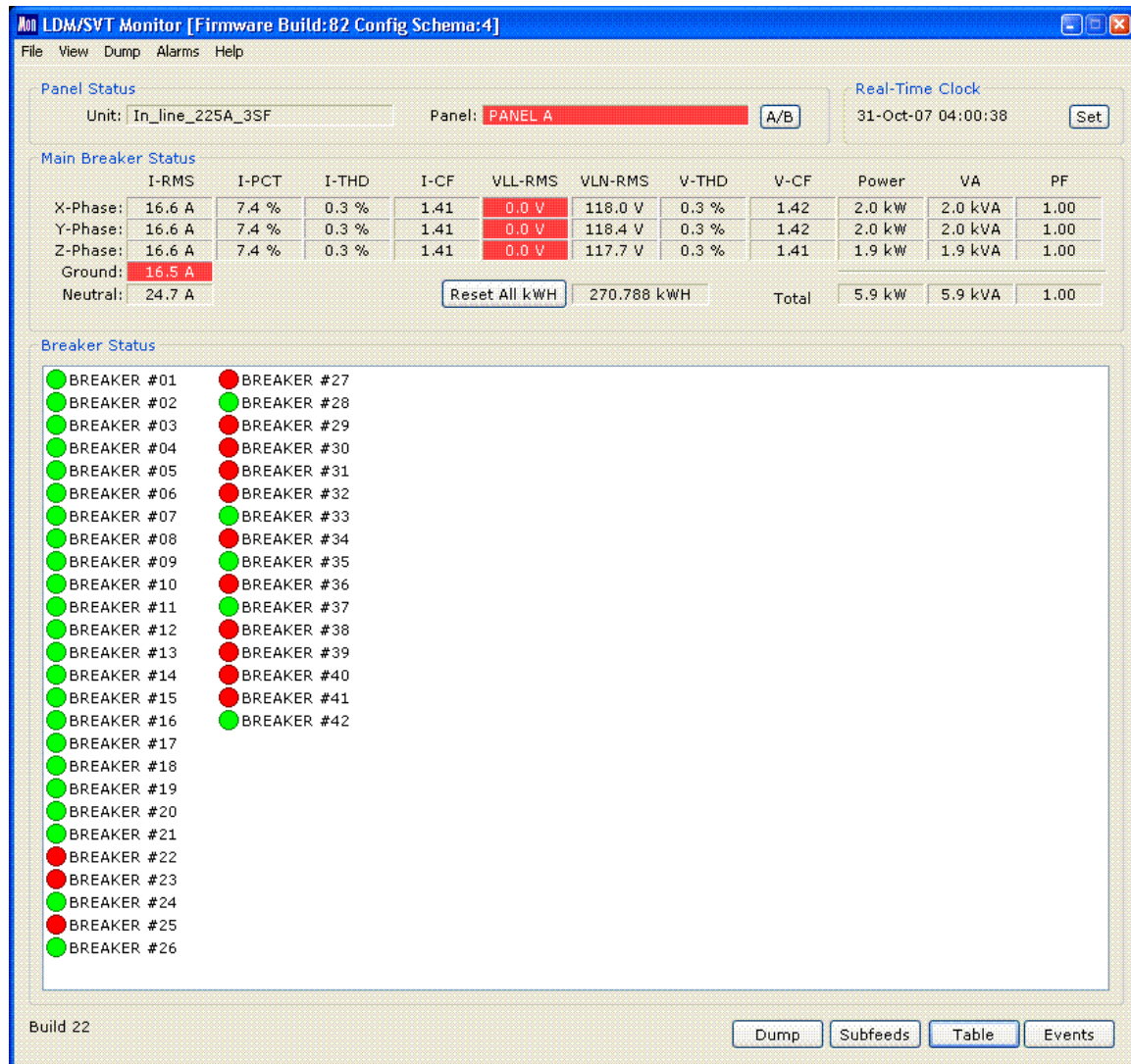


Figure 3: Icon View

- Events - Access "Event" logs
- Auto Zero - Visible to LGS service technicians when "LDM LGS User Key.reg" is installed.

Revision History

Rev. 5 October 30, 2007 - Separated LDM Training Instructions into three separate training documents. Replaced Figure 3 to reflect view in Monitor Build 22. Relabeled Figures 1 and 3.